



FS Alarm Function Setup Manual

Ver. 1.0

Do not reprint this document without our permission.

©2018 FS Alarm

Introduction

This document summarizes how to set up the FS Alarm function (called the alarm below).

Revision History

Ver.	Date	Revision details
1.0	Dec. 20, 2017	First edition

Table of Contents

1. Installing the System	6
2. Checking System Operation.....	10

List of Setup Items

	No.	Setup item	Chapter
<input type="checkbox"/>	1	Installing the System	1.
<input type="checkbox"/>	2	Checking System Operation	2.
		- End -	

* Check off completed items.

1. Installing the System

1. Insert the setup media into the PC.

When you insert the media, the screen shown in "Figure 1: Setup screen" automatically opens.

Perform setup by following the on-screen instructions.

- * You must install Flex Signal in advance.
- * Perform this operation as a user with administrator privileges.
- * If the screen shown in "Figure 1: Setup screen" does not automatically open, select "FSAlarmSetup_x.x.x.x.exe" in the setup media.
- * The x's in FSAlarmSetup_x.x.x.x.exe represent numbers.
(Example: FSAlarmSetup_1.0.0.0.exe)

2. Select "Next" by following the on-screen instructions.

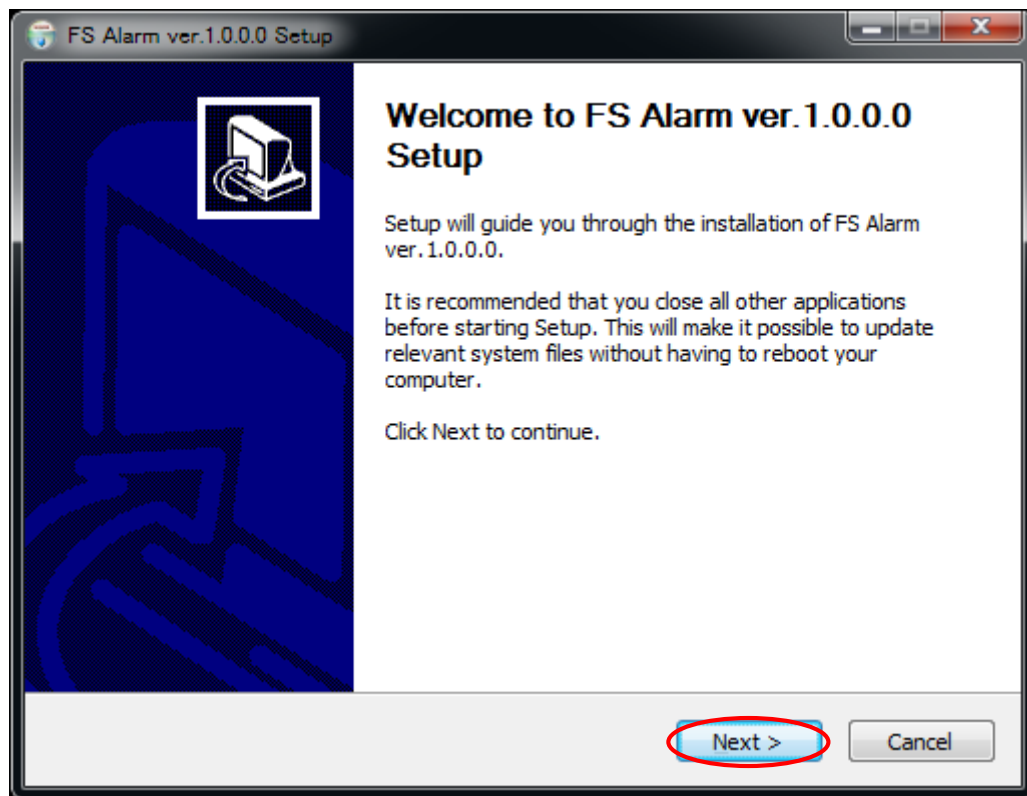


Figure 1: Setup screen

3. Select "Install."

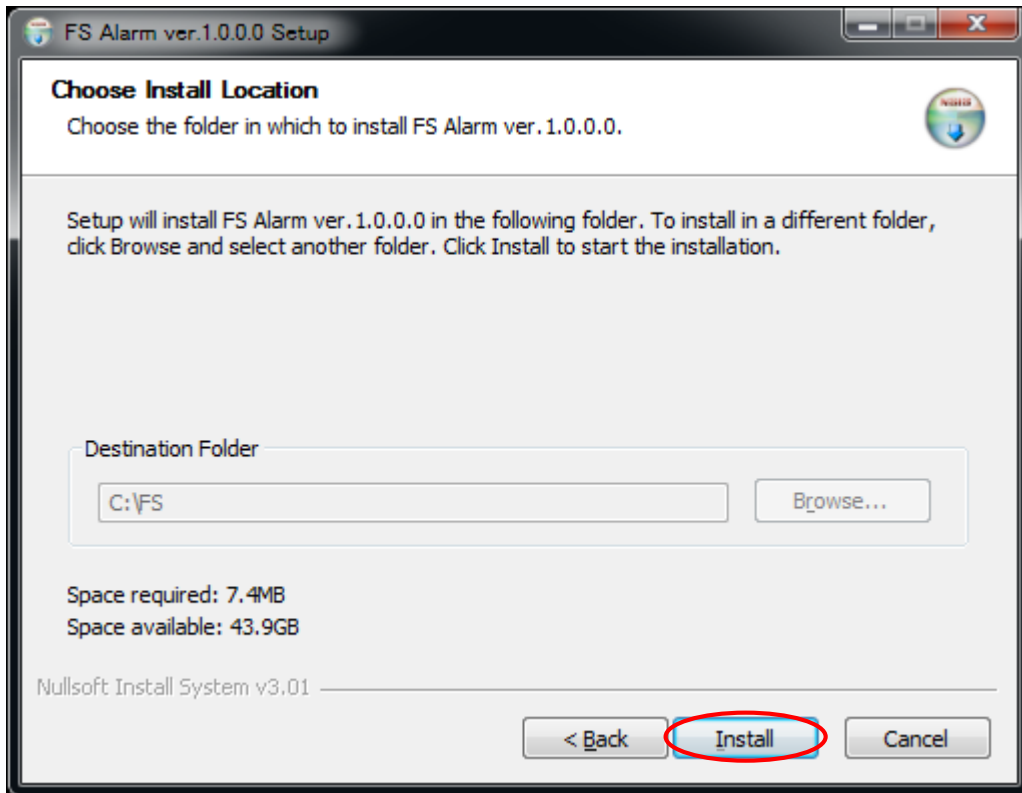


Figure 2: Setup installation destination screen

4. This is the installation screen. Wait until installation has successfully completed.

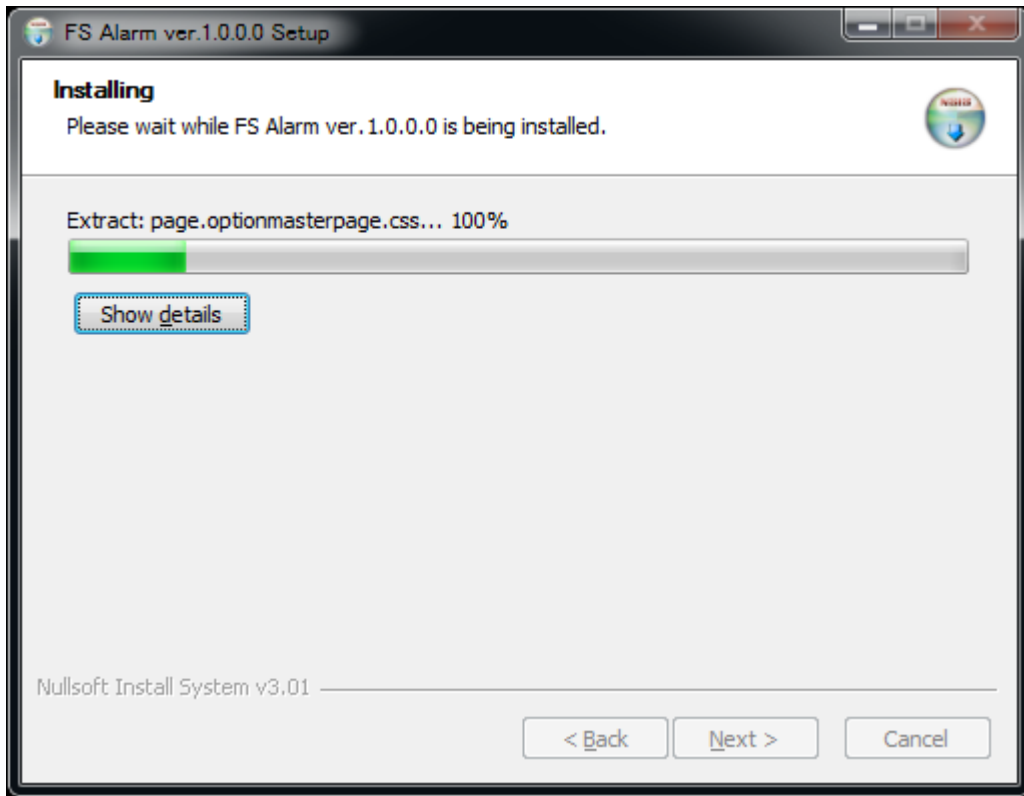


Figure 3: Screen displayed during the setup installation

- When the setup completion screen appears, select "Restart the PC now."
* If you select "Restart the PC later," manually restart it.

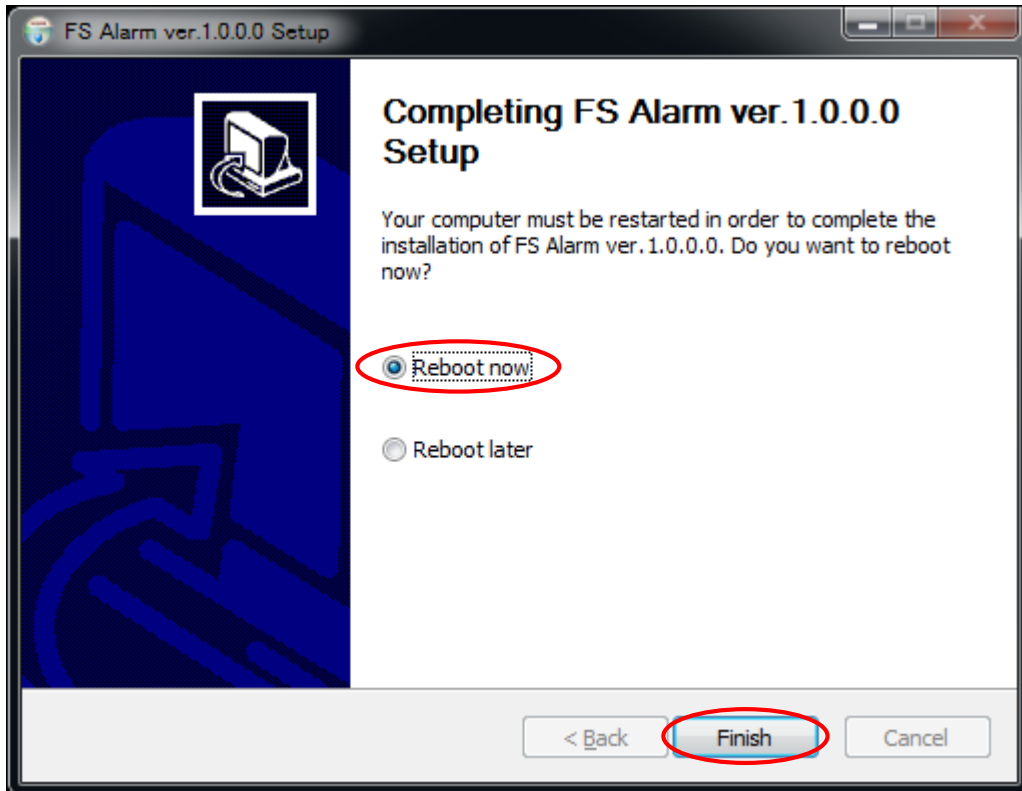


Figure 4: Setup completion screen

2. Checking System Operation

1. Access "http://IP address/FSAlarm" from another PC on the same network as the PC you have set up.

* Issue the authentication key before this operation. Otherwise, a system error occurs.
Confirm that the screen shown in "Figure 5: Initial website screen" is displayed.

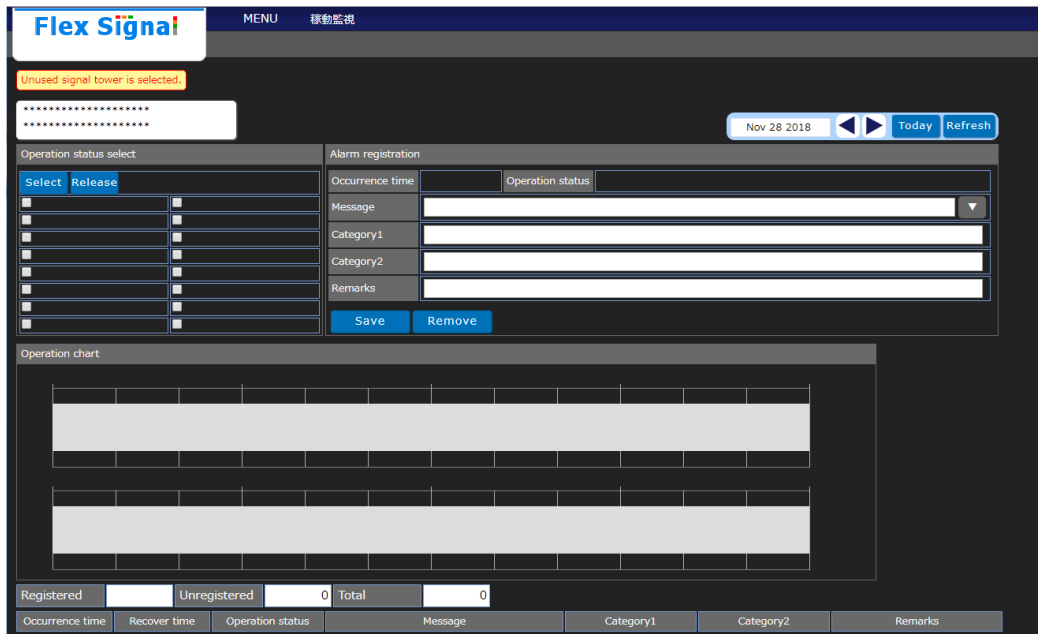


Figure 5: Initial website screen

2. Select "MENU" - "Options - Alarm settings" at the top of the web page.

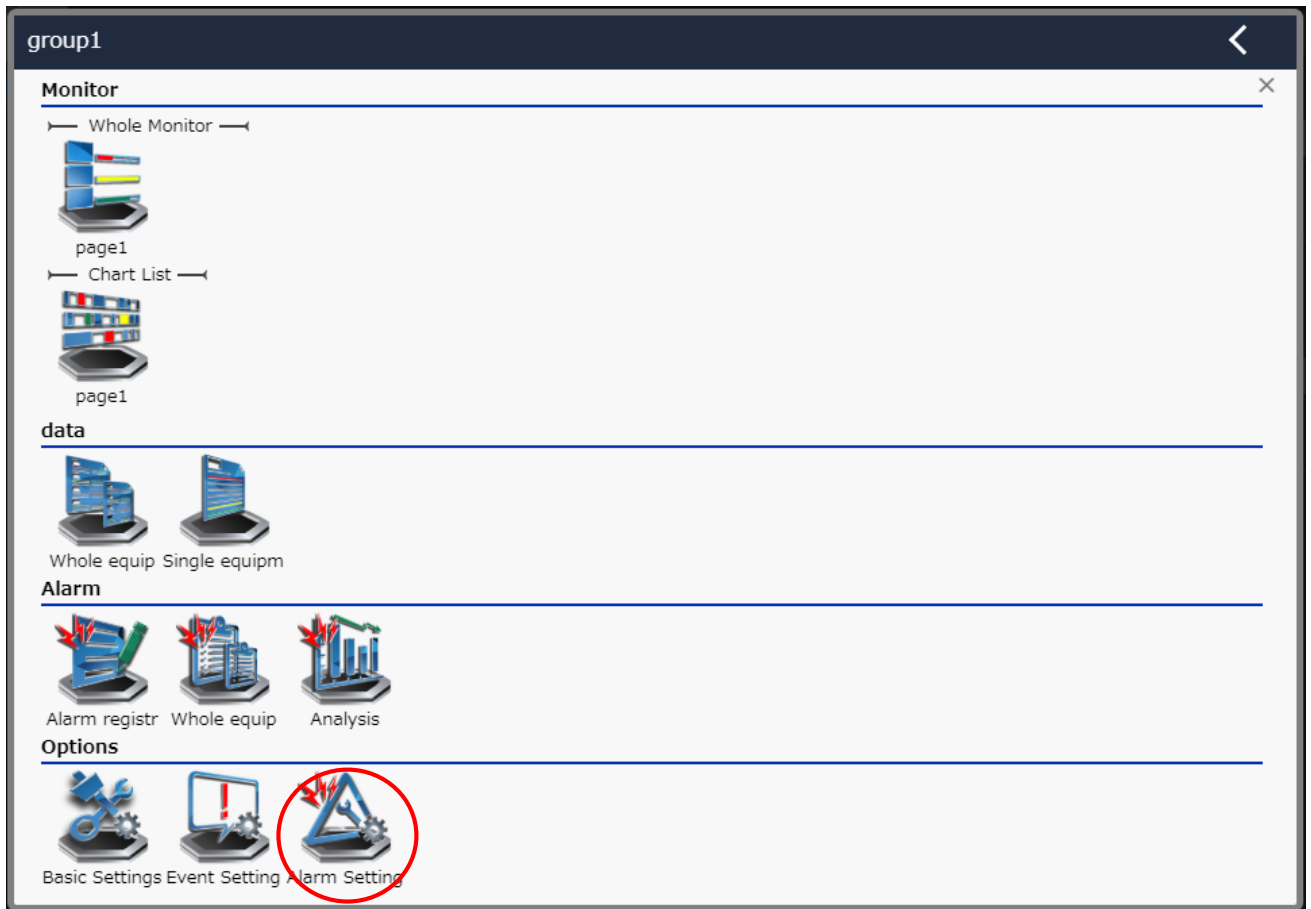


Figure 6: Alarm settings selection screen on the website menu

3. Enter the administrator password in "Password" in the "Administrator authentication" dialog box and select "OK."

* The initial administrator password is admin.

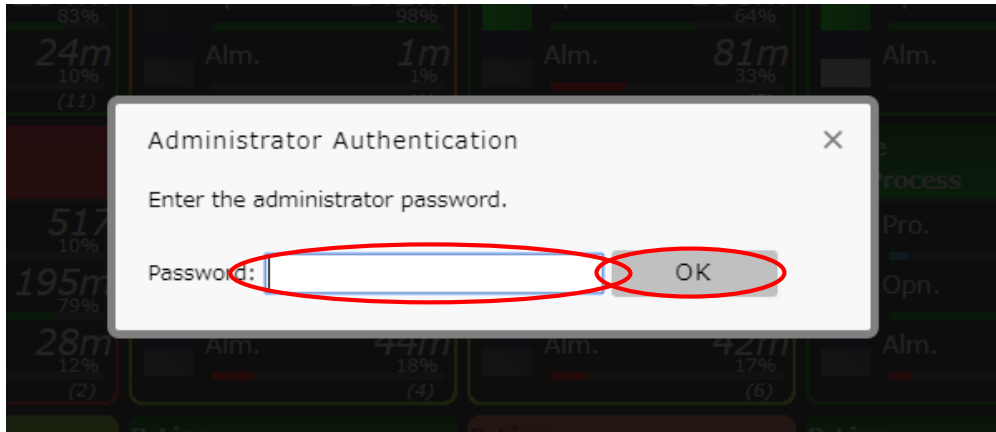


Figure 7: Website administrator authentication screen

4. Execute "Save" in "Signal equipment alarm settings."

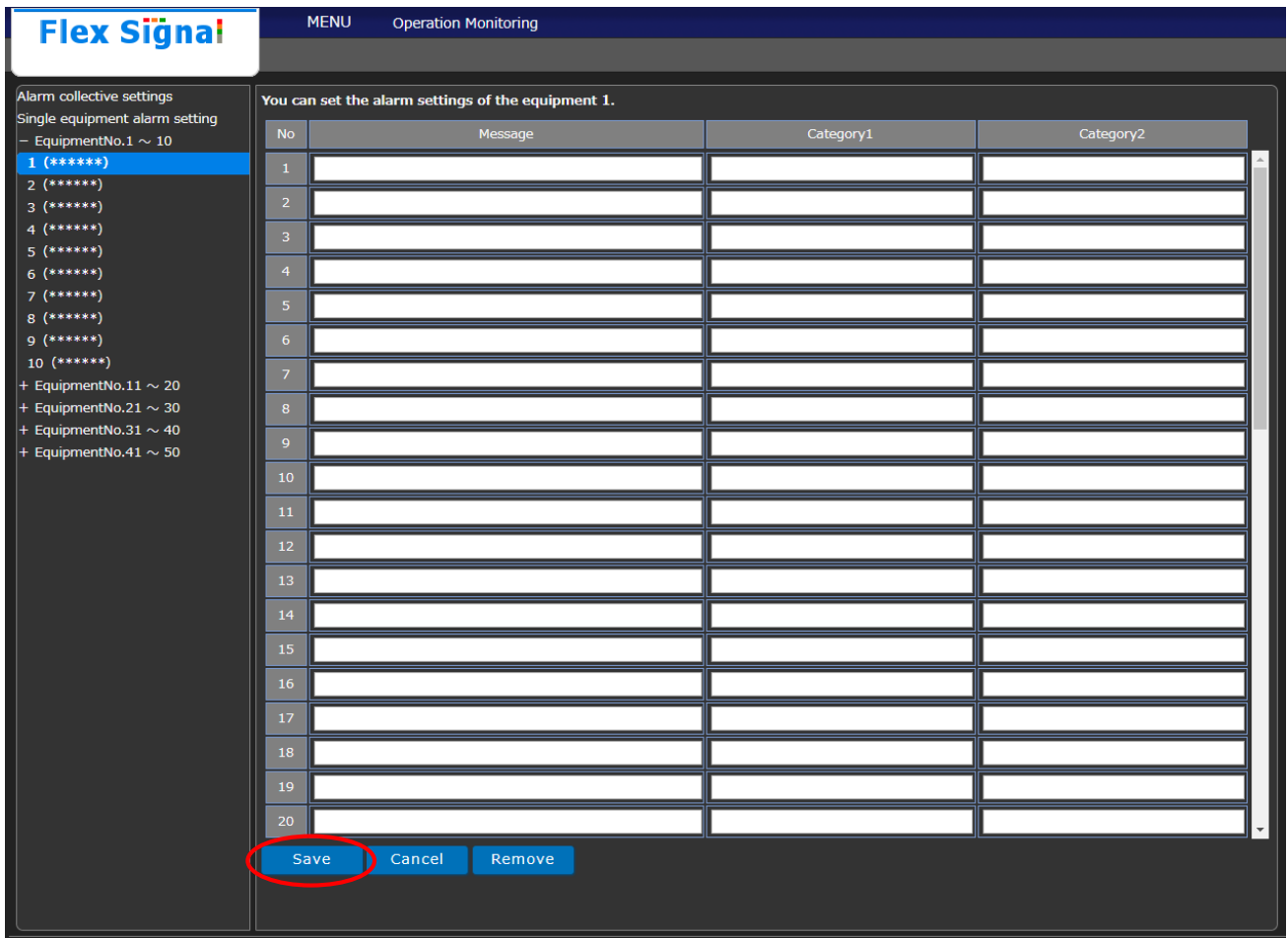


Figure 8: Signal equipment alarm settings screen

5. Confirm that The Equipment 1 alarm settings was registered. is displayed on the screen.

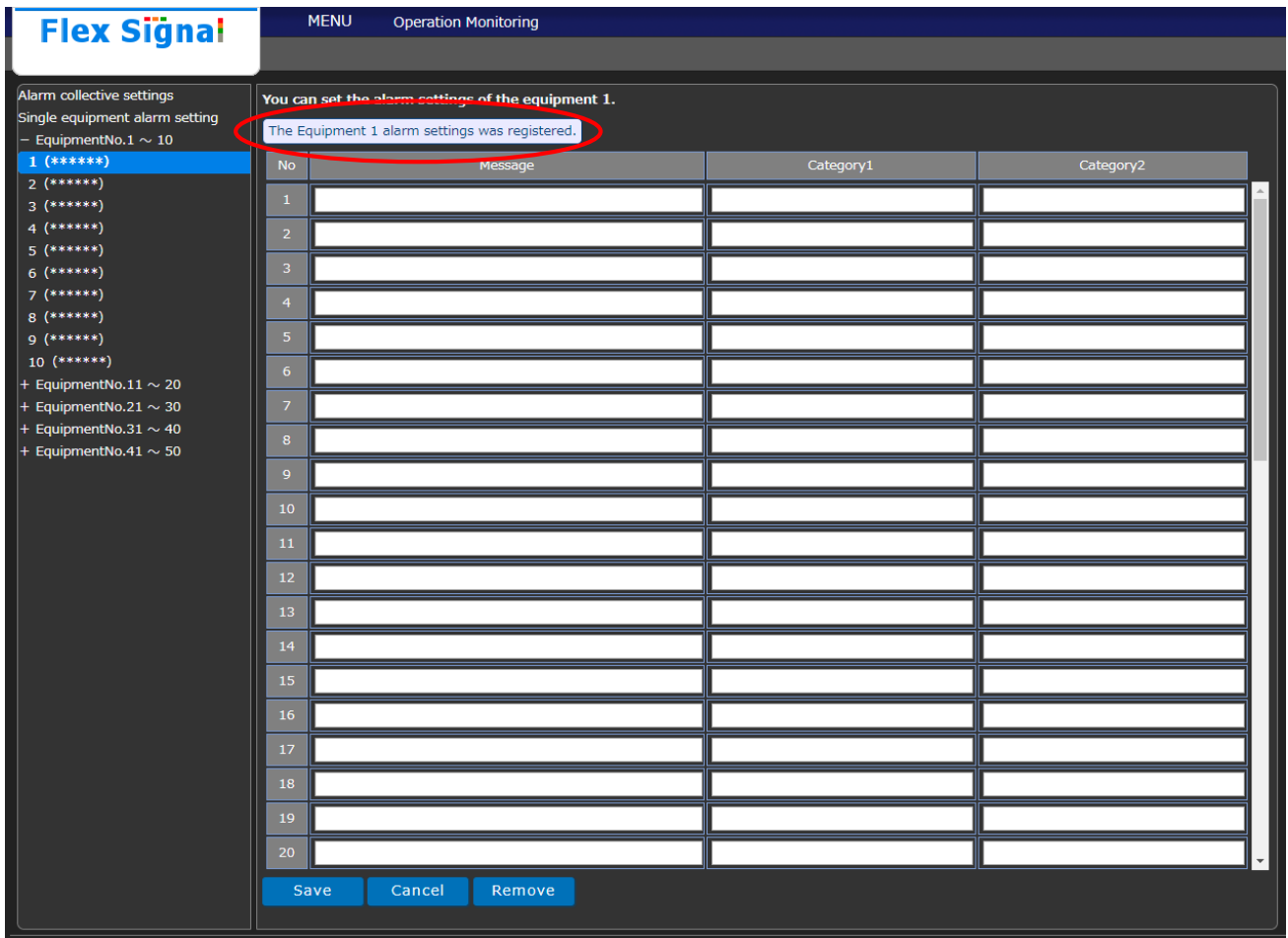


Figure 9: Signal equipment alarm screen when registration is complete



Shinmichi 2-15-1, Nishi-ku, Nagoya-shi, Aichi 451-0043
Website: <http://www.tokai-soft.co.jp/>