



FS Camera Function Instruction Manual

Ver. 1.2

Do not reprint this document without our permission.

©2018 FS Camera

Introduction

Thank you for purchasing the FS Camera function (called the camera function below). This document describes how to use the camera function.

The camera function allows you to perform monitoring and management using the camera in Flex Signal (*1).

(*1) For details on Flex Signal, see the Flex Signal Instruction Manual.

Revision History

Ver.	Date	System version	Revision details
1.0	May 9, 2018	1.0.0	First edition
1.1	Oct. 22, 2018	1.0.1	Added the movie list and movie download functions.
1.2	Oct. 29, 2018	1.0.1	Added FAQs.

Table of Contents

1. Screen Description	5
1-1. Terminology	5
(1) IP address.....	5
(2) Signal tower No.	5
(3) General monitor	5
(4) Record start target.....	5
(5) Invalid characters.....	5
1-2. Accessing the camera function.....	6
(1) Accessing the function.....	6
1-3. Camera settings.....	7
1-4. Checking the display.....	9
(1) General monitor screen	9
(2) Single device screen	10
2. FAQs.....	11
(1) I want to set multiple events to a single camera.....	11
(2) Camera video is not displayed on the general monitor screen.	11
(3) Movie of events that occurred during recording does not play.....	11

1. Screen Description

1-1. Terminology

This section introduces the terms related to the camera function. These terms are used for description purposes in this manual.

(1) IP address

IP address of the camera to be used

(2) Signal tower No.

Number of the signal tower managed by Flex Signal

(3) General monitor

Andon display screen in Flex Signal

(4) Record start target

Event at which to start recording

(5) Invalid characters

* ; & " ' \$ # @ \ < >

These characters cannot be entered on the screen.

1-2. Accessing the camera function

(1) Accessing the function

Select "MENU" - "Common" - "Options - Camera settings" at the top of the "Flex Signal" page.

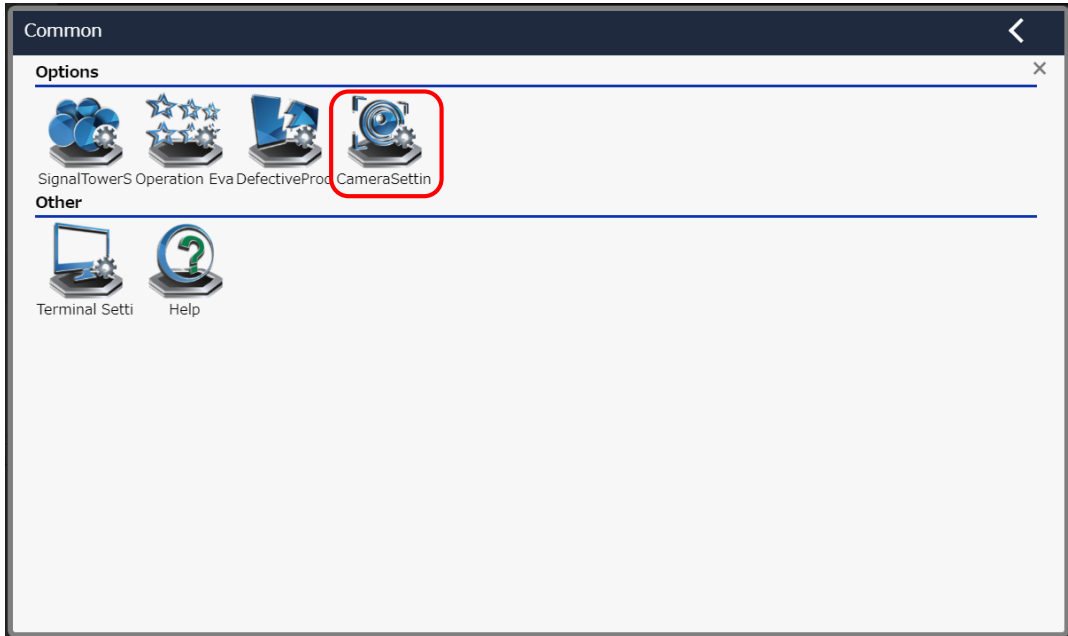


Figure 1: Flex Signal menu screen

1-3. Camera settings

This screen is used to save or edit camera settings.

On this screen, you can display video from the camera on the general monitor or save or edit settings for the event at which to start recording or other items.

- * Up to three cameras can be connected.
- * The same signal tower No. cannot be specified for multiple cameras.

Flex Signal MENU 稼働監視

Camera basic settings Set the basic settings of the camera.

Camera 1 setting

Camera IPAddress	
Camera UserName	
Camera Password	
PC IPAddress	
PC UserName	
PC Password	
SignalNo.	
Display on the Andon screen	<input checked="" type="checkbox"/> To display
Recording start event	Alarm signal ▼
Range before recording	
Range time to record	

Camera 2 setting

Camera IPAddress	
Camera UserName	
Camera Password	
PC IPAddress	
PC UserName	
PC Password	
SignalNo.	
Display on the Andon screen	<input checked="" type="checkbox"/> To display
Recording start event	Alarm signal ▼
Range before recording	
Range time to record	

Camera 3 setting

Camera IPAddress	
Camera UserName	
Camera Password	
PC IPAddress	
PC UserName	
PC Password	
SignalNo.	
Display on the Andon screen	<input checked="" type="checkbox"/> To display
Recording start event	Alarm signal ▼
Range before recording	
Range time to record	

Save Cancel Initialize

Figure 2: Camera settings

Table 1: Description of camera settings

No.	Item	Description
1	Camera IP address	Enter the camera IP address.
2	Camera UserName	Enter the camera user name.
3	Camera Password	Enter the camera password.
4	PC IPAddress	Enter the PC IP address.
5	PC UserName	Enter the PC user name.
6	PC Password	Enter the PC password.
7	Signal No.	Enter the target signal tower No.
8	Display on the Andon screen	Specify whether to display video from the camera on the general monitor. * If the "Display" check box is cleared, the general monitor does not display video from the camera.
9	Recording start event	Select the event at which to start recording. * Recorded movies can be watched on the Flex Signal single device screen.
10	Range before recording	Enter the first half of the time range in which to start recording.
11	Range time to record	Enter the last half of the time range in which to start recording.
12	Save	Save the settings for the target camera.
13	Cancel	Cancel the edited settings for the target camera.
14	Initialize	Changes the settings for the target camera to the initial settings.

1-4. Checking the display

(1) General monitor screen

Check the display of the video from the specified camera.

* Video is not displayed if the PC where Flex Signal is installed cannot communicate with the camera.



Figure 3: General monitor screen

(2) Single device screen

View or download recorded movies.

Click a recorded event in the operation chart or a date/time in the movie list to play a recorded movie.

Click  in the movie list to download the relevant recorded movie.

* There is no movie if the specified event did not occur.

* Events that occur during recording are discarded.

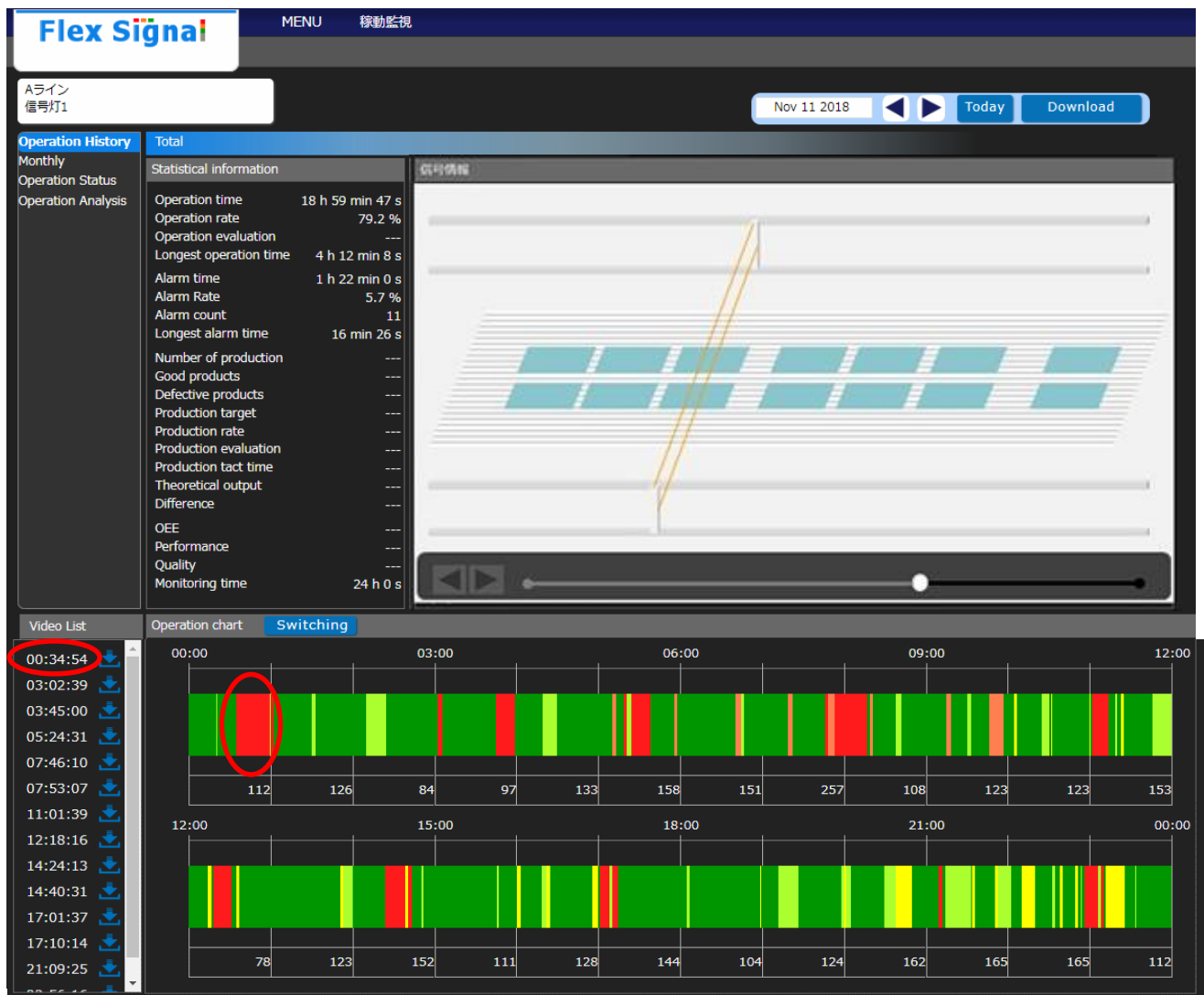


Figure 4: Single device screen

2. FAQs

(1) I want to set multiple events to a single camera.

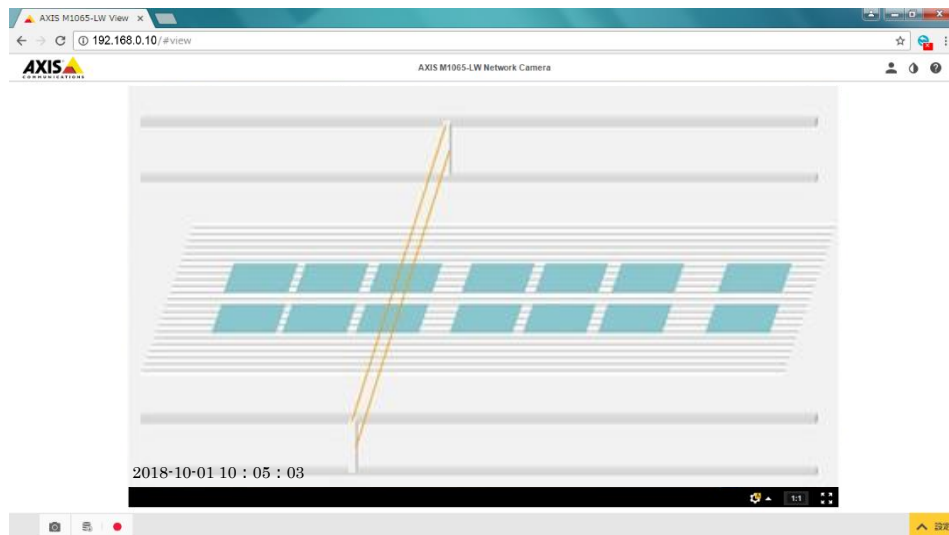
Only one event can be set to a single camera.

(2) Camera video is not displayed on the general monitor screen.

The camera may not be connected to the PC on which Flex Signal is installed (called the PC below).

(i) Be sure to use Chrome as your browser.

(ii) Directly enter the IP address of the camera in the browser to display the following screen (the settings screen of the camera). If the following screen does not appear, the PC is not communicating with the camera. Double check the IP addresses of the camera and PC.

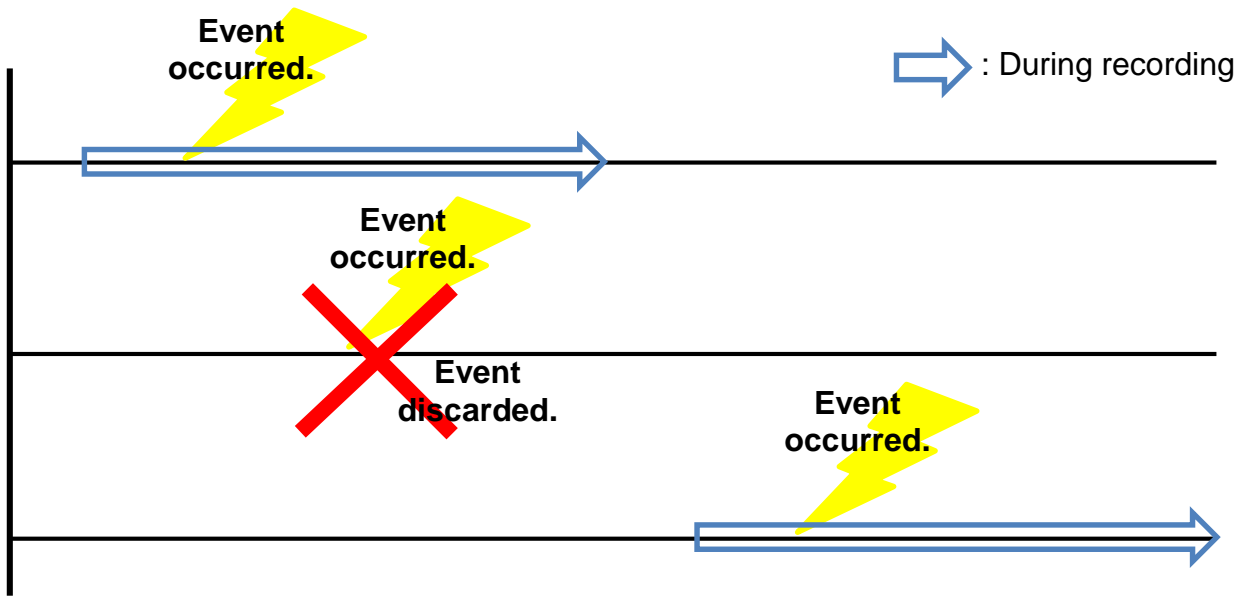


(iii) Check that the "General monitor display" check box is selected under Flex Signal camera settings.

(iv) Review all the Flex Signal camera settings to confirm that they are correct.

(3) Movie of events that occurred during recording does not play.

Events that occur during recording are not recorded but are discarded.





Shinmichi 2-15-1, Nishi-ku, Nagoya-shi, Aichi 451-0043
Website: <http://www.tokai-soft.co.jp/>