



---

# **FS Dashboard Function Setup Manual**

---

Ver. 3.0

Do not reprint this document without our permission.

©2013 FS Dashboard

# Introduction

This document summarizes how to set up the FS Dashboard function (called the dashboard below).



# Table of Contents

1. Installing the System .....	6
2. Checking System Operation.....	10



# 1. Installing the System

1. Insert the setup media into the PC.

When you insert the media, the screen shown in "Figure 1: Setup screen" automatically opens.

Perform setup by following the on-screen instructions.

- \* You must install Flex Signal in advance.
- \* Perform this operation as a user with administrator privileges.
- \* If the screen shown in "Figure 1: Setup screen" does not automatically open, select "FSDashboardSetup\_x.x.x.x.exe" in the setup media.
- \* The x's in FSDashboardSetup\_x.x.x.x.exe represent numbers.  
(Example: FSDashboardSetup\_2.0.0.0.exe)

2. Select "Next" by following the on-screen instructions.

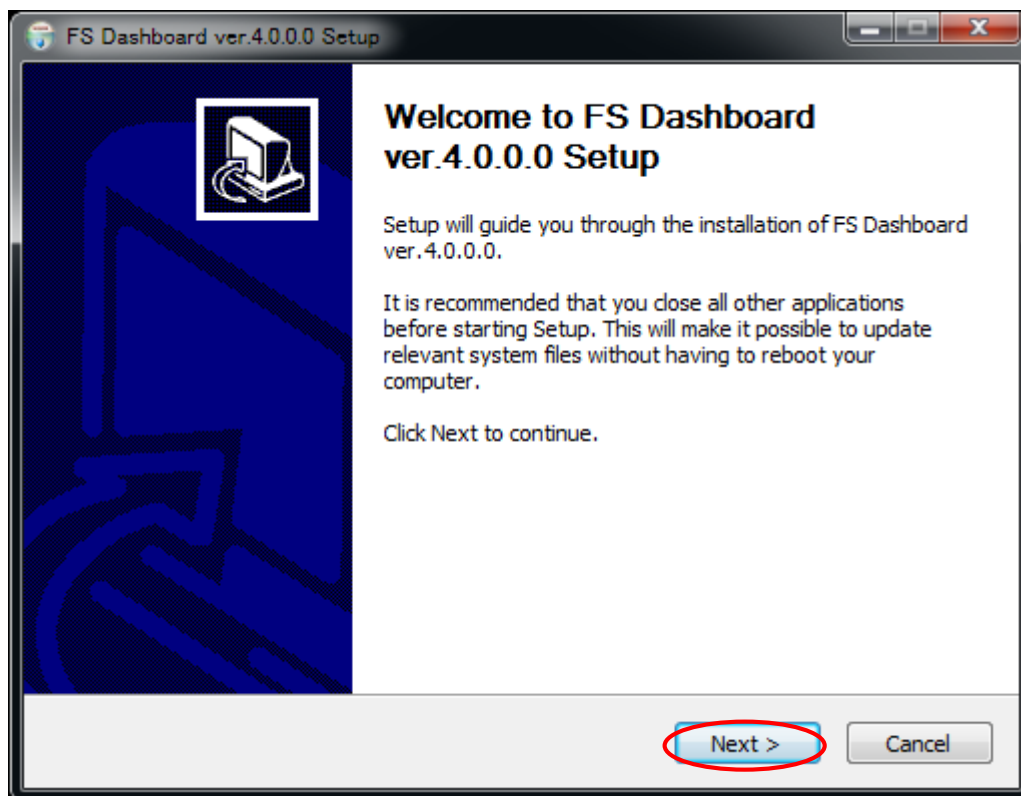


Figure 1: Setup screen

3. Select "Install."

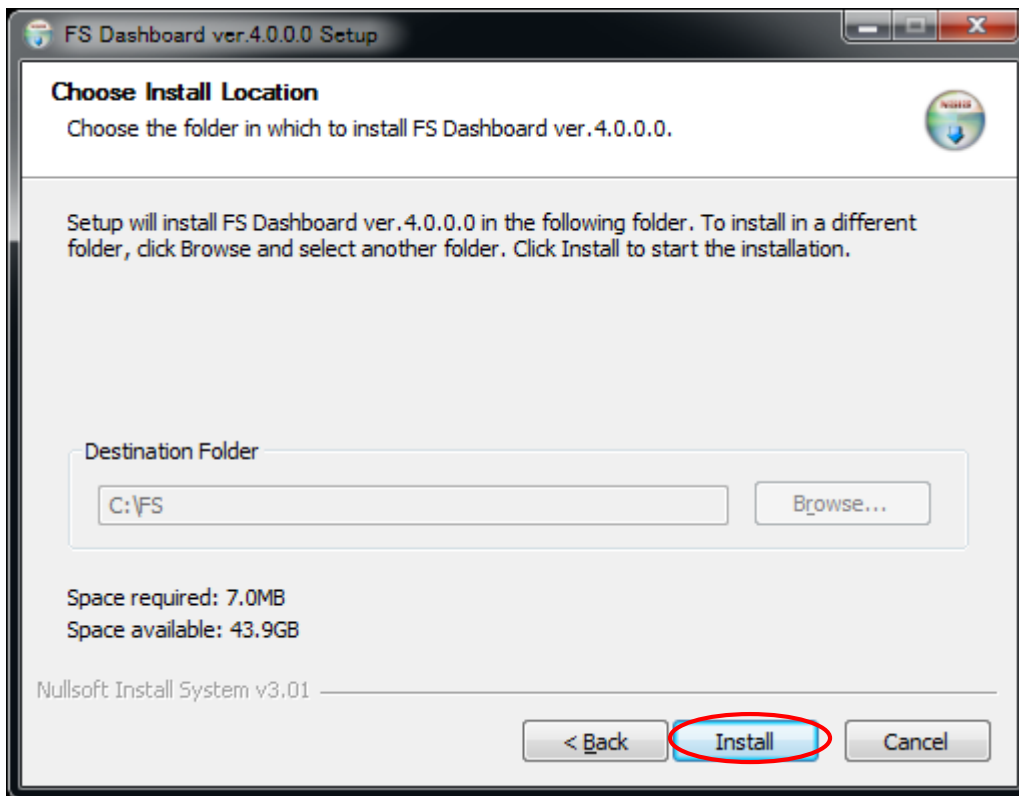


Figure 2: Setup installation destination screen

4. This is the installation screen. Wait until installation has successfully completed.

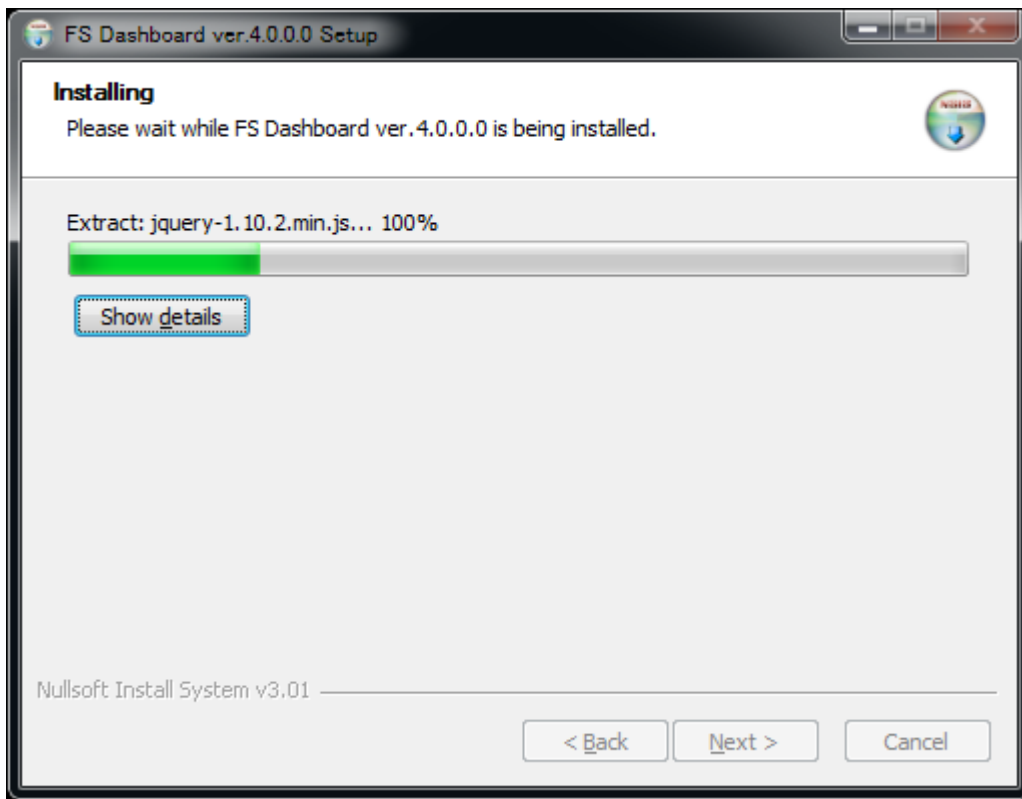


Figure 3: Screen displayed during the setup installation



- When the setup completion screen appears, select "Restart the PC now."  
\* If you select "Restart the PC later," manually restart it.

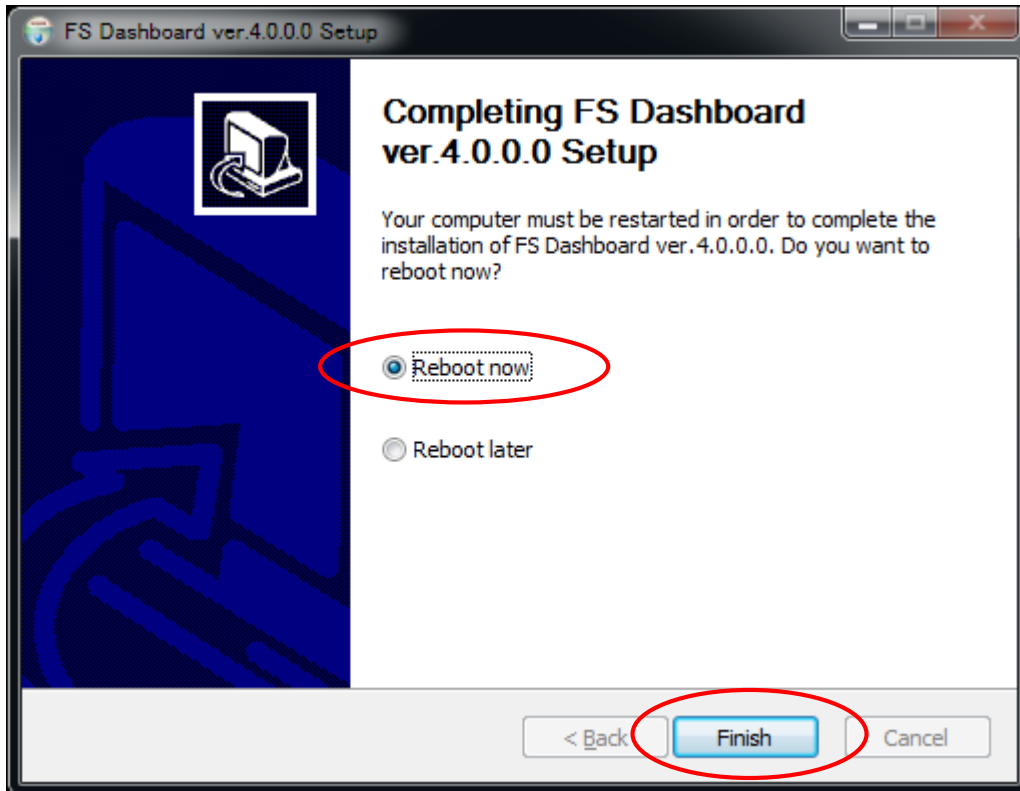


Figure 4: Setup completion screen

## 2. Checking System Operation

1. Select "Start" - "All Programs" - "FS Options" - "FSDashboard."

\* Issue the authentication key before this operation. Otherwise, a system error occurs.  
 Confirm that the screen shown in "Figure 5: Initial website screen" is displayed.

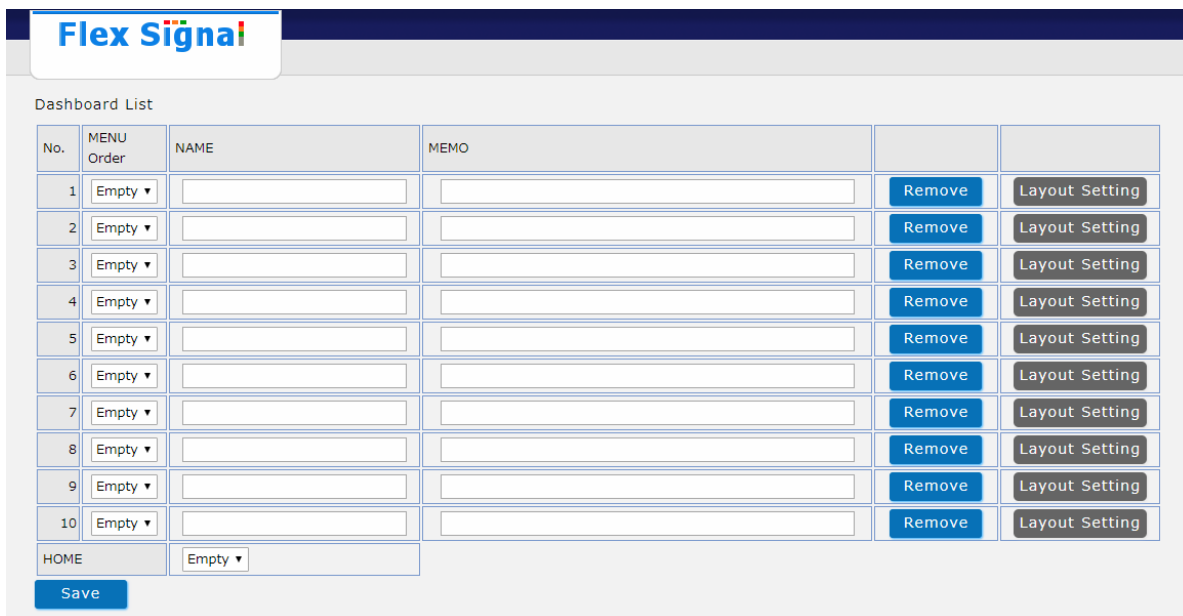


Figure 5: Initial website screen

2. Access "http://IP address/FSDashboard" from another PC on the same network as the PC you have set up.  
 Confirm that the screen shown in "Figure 5: Initial website screen" is displayed.

3. Select "Edit layout" in the right section of the web page.

The screenshot shows the 'Flex Signal' dashboard setup interface. At the top, there is a 'Flex Signal' logo. Below it, the section is titled 'Dashboard List'. It contains a table with 10 rows. Each row has columns for 'No.', 'MENU Order', 'NAME', 'MEMO', and two action buttons: 'Remove' and 'Layout Setting'. The 'Layout Setting' button for the first row is circled in red. Below the table, there is a 'HOME' label and a dropdown menu set to 'Empty', followed by a 'Save' button.

No.	MENU Order	NAME	MEMO		
1	Empty ▾	<input type="text"/>	<input type="text"/>	Remove	Layout Setting
2	Empty ▾	<input type="text"/>	<input type="text"/>	Remove	Layout Setting
3	Empty ▾	<input type="text"/>	<input type="text"/>	Remove	Layout Setting
4	Empty ▾	<input type="text"/>	<input type="text"/>	Remove	Layout Setting
5	Empty ▾	<input type="text"/>	<input type="text"/>	Remove	Layout Setting
6	Empty ▾	<input type="text"/>	<input type="text"/>	Remove	Layout Setting
7	Empty ▾	<input type="text"/>	<input type="text"/>	Remove	Layout Setting
8	Empty ▾	<input type="text"/>	<input type="text"/>	Remove	Layout Setting
9	Empty ▾	<input type="text"/>	<input type="text"/>	Remove	Layout Setting
10	Empty ▾	<input type="text"/>	<input type="text"/>	Remove	Layout Setting

HOME

Figure 6: Edit layout selection screen

4. Select the component you want to add from "Select component" at the top of the web page and select "Add component."

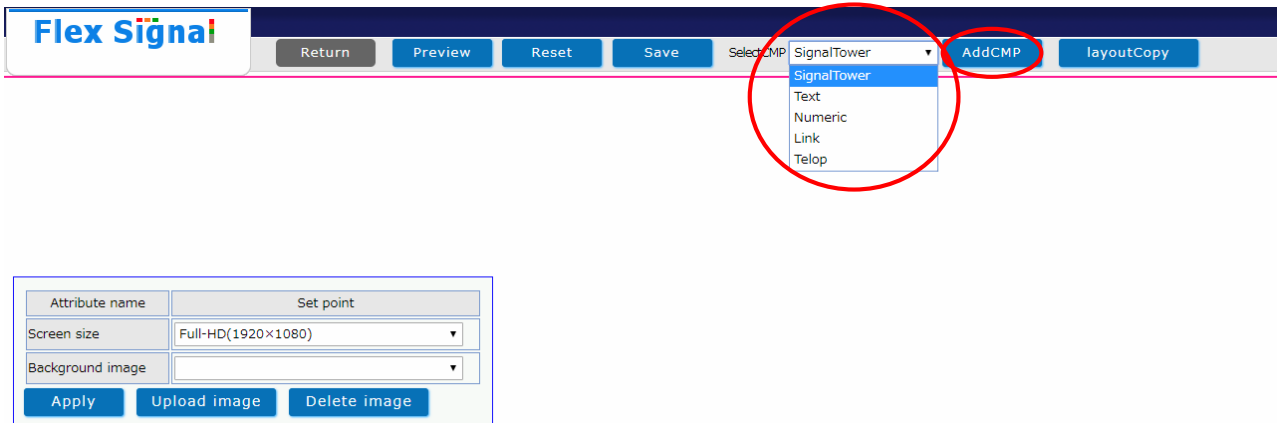


Figure 7: Layout editing screen

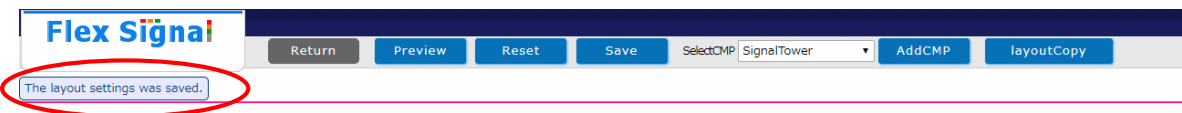
5. After adding the component, execute "Save" at the top of the web page.



Attribute name	Set point
Y Position	93
X Position	170
Signal tower No.	1
Signal tower number of the tiers	3Tiers
Signal tower color setting	No.1: Red
	No.2: Yellow
	No.3: Green
	No.4: Blue
	No.5: White
Signal tower size	50
Signal tower direction	vertical
Signal tower design	Standard
<input type="button" value="Apply"/> <input type="button" value="Delete"/>	

Figure 8: Edited layout registration screen

6. Confirm that The layout settings was saved. is displayed on the screen.



Attribute name	Set point
Screen size	Full-HD(1920×1080)
Background image	
<input type="button" value="Apply"/> <input type="button" value="Upload image"/> <input type="button" value="Delete image"/>	

Figure 9: Edited layout registration completion screen

7. Select "Back to list" at the top of the web page.

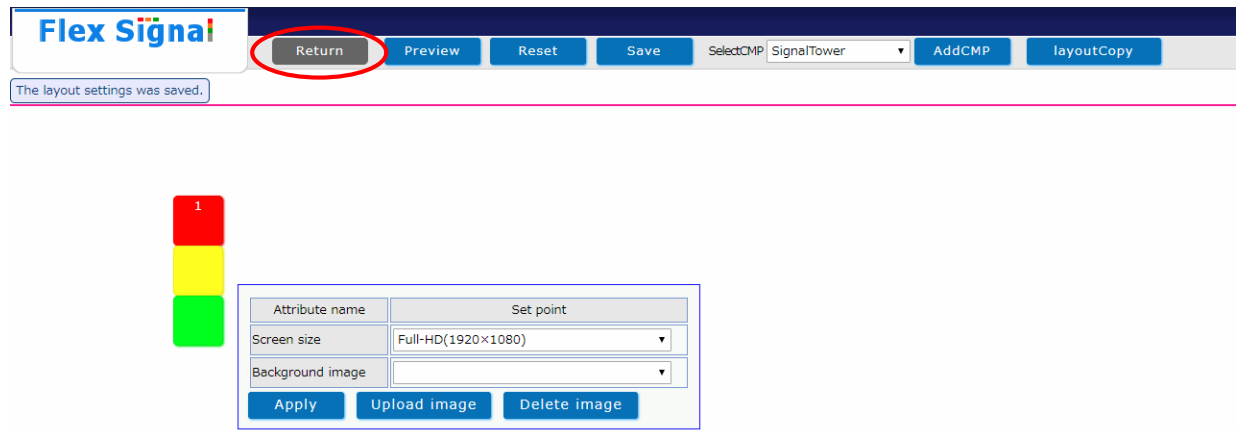


Figure 10: Layout editing list selection screen

- Select "Menu order," enter a name, and execute "Save" at the bottom of the web page.

Flex Signal

Dashboard List

No.	MENU Order	NAME	MEMO		
1	1	Dashboard1		Remove	Layout Setting
2	Empty			Remove	Layout Setting
3	Empty			Remove	Layout Setting
4	Empty			Remove	Layout Setting
5	Empty			Remove	Layout Setting
6	Empty			Remove	Layout Setting
7	Empty			Remove	Layout Setting
8	Empty			Remove	Layout Setting
9	Empty			Remove	Layout Setting
10	Empty			Remove	Layout Setting

HOME Empty

Save

Figure 11: Dashboard list screen

- Confirm that The setting of dashboard was saved. is displayed on the screen.

Flex Signal

The setting of dashboard was saved.

Dashboard List

No.	MENU Order	NAME	MEMO		
1	1	Dashboard1		Remove	Layout Setting
2	Empty			Remove	Layout Setting
3	Empty			Remove	Layout Setting
4	Empty			Remove	Layout Setting
5	Empty			Remove	Layout Setting
6	Empty			Remove	Layout Setting
7	Empty			Remove	Layout Setting
8	Empty			Remove	Layout Setting
9	Empty			Remove	Layout Setting
10	Empty			Remove	Layout Setting

HOME Empty

Save

Figure 12: Dashboard list registration completion screen

10. Select "Start" - "All Programs" - "Flex Signal" - "FlexSignal."

Confirm that "MENU" - "Monitor - Dashboard" is added at the top of the web page and that the registered dashboard is displayed.

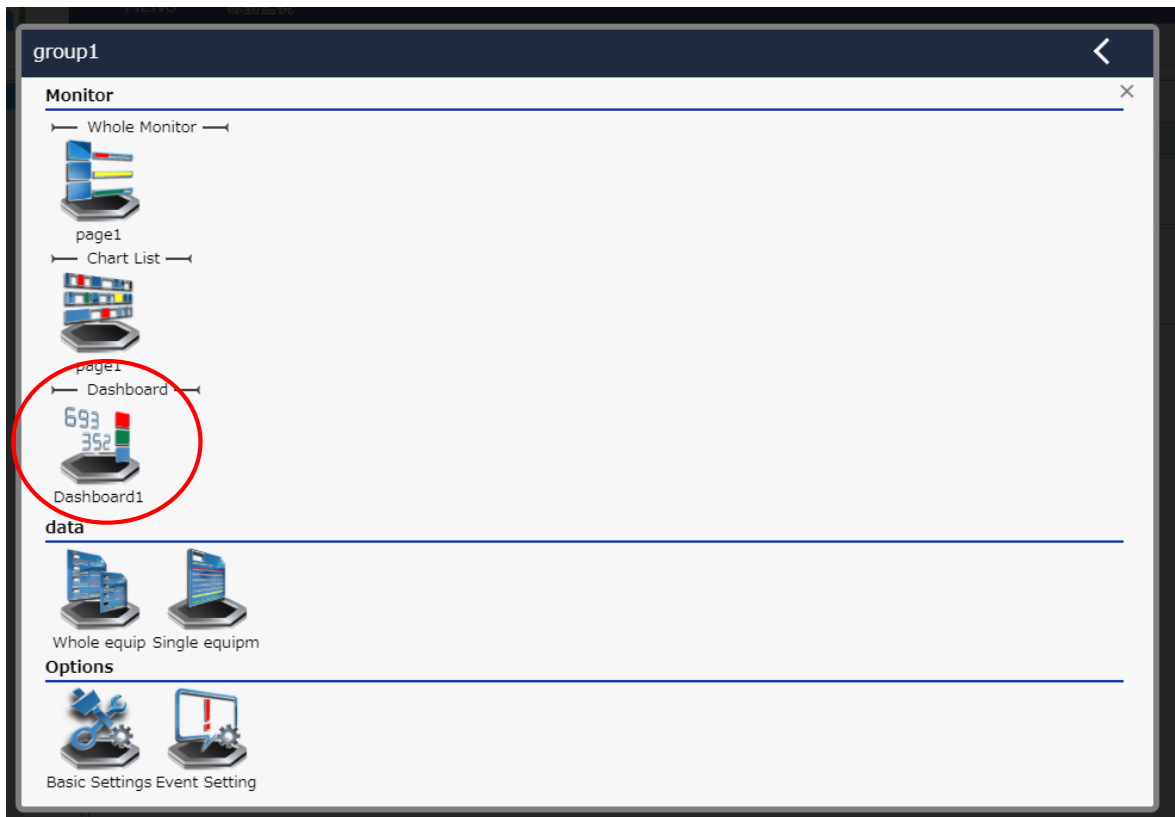


Figure 13: Dashboard registration confirmation screen





Shinmichi 2-15-1, Nishi-ku, Nagoya-shi, Aichi 451-0043  
Website: <http://www.tokai-soft.co.jp/>